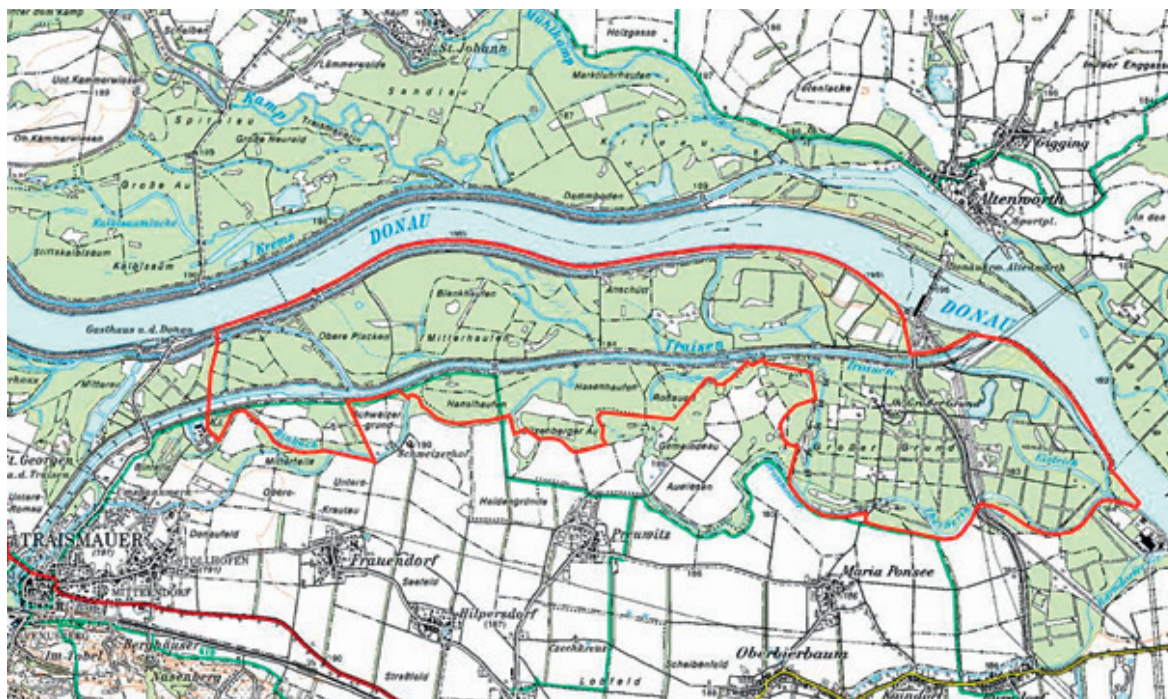


Structuring measures in the Altenwörth reservoir



Project area

Period of construction/implementation (without monitoring)

04.10.2011 to 2019 (planned)

Financial expenditures

Total investment in €	€ 28,831,000.-
▪ Of which UFG funding	€ 3,294,209.-
▪ Provincial state funding	€ 823,552.-
▪ EU funding	€ 5,297,173.-
▪ Miscellaneous	€ 1,110,000.-
(Estimated) monitoring expenditure in €	€ 780,000.-
(Estimated) operating expenditure in €/year	€ 30,000.-

Generation losses in MWh/year

None

Company	Water body	Water body number	River kilometre
VERBUND Hydro Power GmbH	Traisen	411080008, 411080007	0.00–7.50

Aim of measure	Type of measure
Morphological improvement of the ecological conditions	Re-establishment of the meandering river type on the Traisen

Description of measure

The „LIFE+ Traisen Project“ involves relaying the course of the Traisen. Far-reaching changes took place in the 70's on account of river engineering measures and the diversion of the Traisen estuary in the section below Altenwörth power plant: The regulated river dug itself very deeply into the ground, which led to a negative impact on the nature; natural structures and habitats were restricted, the biodiversity reduced accordingly and the typical floodplains landscape was lost.

The new bed of the Traisen has a total length of 12.2 km and, in accordance with the bends of the river, is divided into four construction sections. By means of alternating fords and channels with flat sand or banks of gravel on the slip-off banks and steep undercut banks, the newly created Danube tributary will offer an ecologically diverse habitat and transition region. The goal is the greatest possible protection of the existing natural environment in the floodplains area through the creation of a meandering river, which is able to dynamically further develop in the future and offer a new riverine habitat. A floodplains foreland with frequently flooded areas will be created along a new river course, which also creates constant conditions at high water levels on account of the measures implemented in conjunction with the old Traisen.

On account of the increased frequency of flooding along the new course of the river, the installation of diverse standing bodies of water around the marshland and the new bed of the Traisen provide the ideal site prerequisites for the development of the soft marshland, especially that of the silver willow. The ratio of floodplain and typical river habitats, which currently only amounts to 6% of the surface in the entire Natura 2000 area, will be significantly increased. Fish passable integration of the floodplains area and the individual floodplains water bodies will be created with the new course of the Traisen and the fish fauna sustainably supported. At least 30 fish species are set to benefit from this measure.

In addition, twelve floodplain ponds measuring between 0.6 ha up to 1.6 ha will be created. The Danube cycle path will undergo small-scale relocation and a new cycle path bridge will be built.